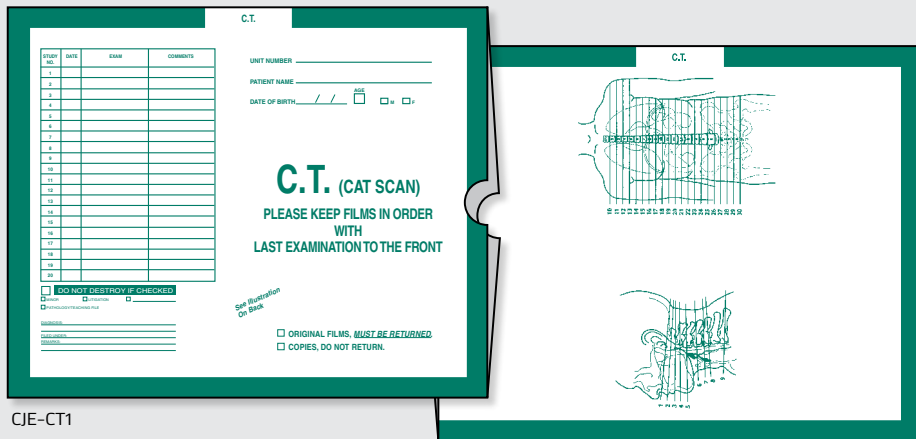


CATEGORY INSERT JACKETS

STANDARD SIZE

FilePro™ Category Insert Jackets

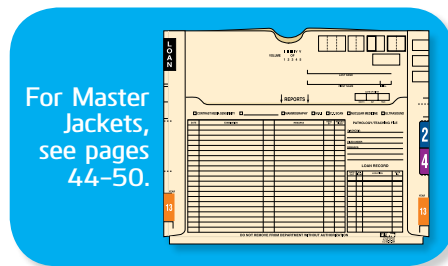


CJE-CT1

- Superior Print Quality
- Better Paper Quality
- Customizable

Huge variety of category titles and colors

- Standard size: 17-1/2"W x 14-1/4"H
- Durable 28# Kraft paper stock
- Most available in both open end and open top styles
- Anatomical illustrations on seam side suitable for normal / abnormal reference
(See chart below for desired category, size & style. Anatomical illustrations appear as indicated.)

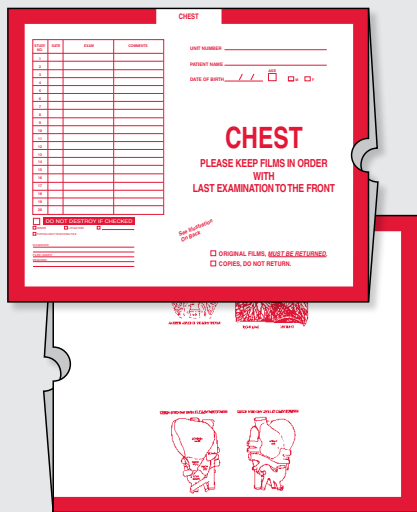


Qty.
250/Case

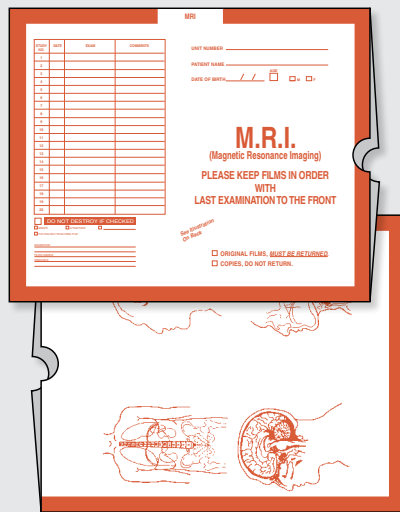
Standard Size Category Insert Jackets - 17-1/2"W x 14-1/4"H									
Procedure	Illustration	Product Number			Procedure	Illustration	Product Number		
		Open End (Short Dimension)	Open Top (Long Dimension)	Color (Border/Copy)			Open End (Short Dimension)	Open Top (Long Dimension)	Color (Border/Copy)
Abdomen	Yes	CJE-AB1	CJT-AB1	Yellow\Green	Mammography	Yes	CJE-MA2	CJT-MA2	Pink
Angio	Yes	CJE-AN1	CJT-AN1	Magenta	Miscellaneous	No	CJE-MI1	CJT-MI1	White
B.E. (Barium Enema)	Yes	CJE-BE1	CJT-BE1	Gold	MRI (Magnetic Resonance Imaging)	Yes	CJE-MR1	CJT-MR1	Rust
Bone	Yes	CJE-BO1	CJT-BO1	Yellow	MRI (Magnetic Resonance Imaging)	Yes	CJE-MR2	CJT-MR2	Black
Chest	Yes	CJE-CH1	CJT-CH1	Brown	MRI (Magnetic Resonance Imaging)	Yes	CJE-MR3	CJT-MR3	Turquoise
Chest	Yes	CJE-CH2	CJT-CH2	Briar	MRI (Magnetic Resonance Imaging)	Yes	CJE-MR4	CJT-MR4	Gray
C.T. (Cat Scan)	Yes	CJE-CT1	CJT-CT1	Kelly Green	Nuclear Medicine	Yes	CJE-NU1	CJT-NU1	Red
C.T. (Cat Scan)	Yes	CJE-CT2	CJT-CT2	Red	Nuclear Medicine	Yes	CJE-NU2	CJT-NU2	Manila
C.T. (Cat Scan)	Yes	CJE-CT3	CJT-CT3	Khaki	P.E.T. (Positron Emission Tomography)	Yes	—	CJT-PE1	Light Green
D.S.A. (Digital Sub Angio)	Yes	CJE-DS1	CJT-DS1	Magenta	Plain	No	CJE-PL1	CJT-PL1	White
Extremities	Yes	CJE-EX1	CJT-EX1	Yellow	Special Procedures	No	CJE-SP1	CJT-SP1	Olive
G.I. (Gastro Intestinal)	Yes	CJE-GI1	CJT-GI1	Gray	Spine	Yes	CJE-SE1	CJT-SE1	Black
G.U. (Ganito Urinary)	Yes	CJE-GU1	CJT-GU1	Dark Orange	Spine	Yes	CJE-SE2	CJT-SE2	Green
Head and Neck	Yes	CJE-HE1	CJT-HE1	Blue	Ultrasound	No	CJE-UL1	CJT-UL1	Purple
I.V.P. (Intravenous Pyelogram)	Yes	—	CJT-IV1	Peach	Ultrasound	No	CJE-UL2	CJT-UL2	Gray
Mammography	Yes	CJE-MA1	CJT-MA1	Dark Blue	Ultrasound	No	—	CJT-UL3	Blue\Gray

CATEGORY INSERT JACKETS

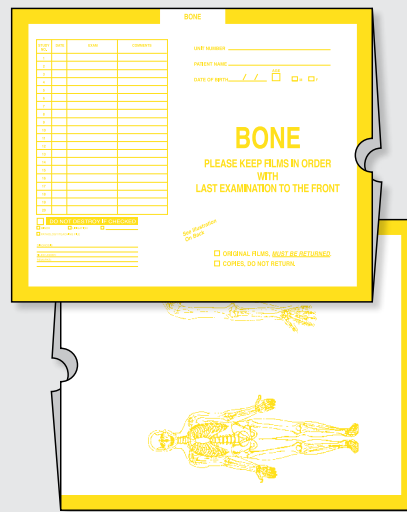
STANDARD SIZE/DOWNSIZE



CJE-CH1



CJE-MR1

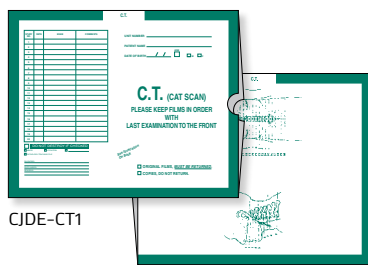


CJE-BO1

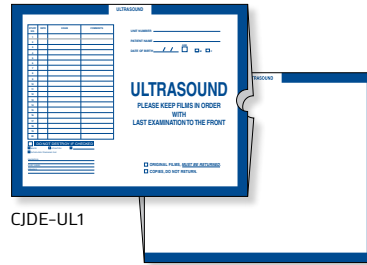
Downsize Category Insert Jackets

- Size: 12-1/2"W x 10-1/2"H
- Durable 28# Kraft paper stock
- Most available in both open end and open top styles
- Anatomical illustrations on seam side suitable for normal / abnormal reference (See chart below for desired category, size & style. Anatomical illustrations appear as indicated.)

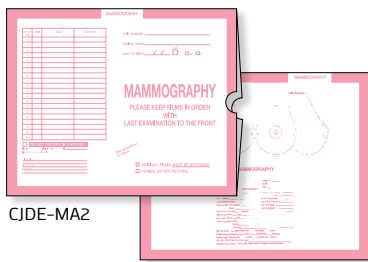
Qty.
250/Case



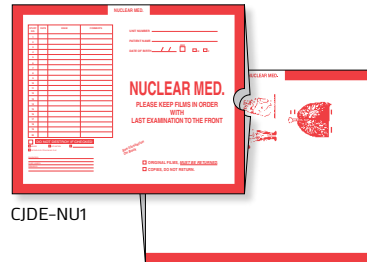
CJDE-CT1



CJDE-UL1



CJDE-MA2



CJDE-NU1

Down Size Category Insert Jackets - 12-1/2"W x 10-1/2"H

Procedure	Illustration	Product Number			Color (Border/Copy)	Procedure	Illustration	Product Number		
		Open End (Short Dimension)	Open Top (Long Dimension)					Open End (Short Dimension)	Open (Long Dimension)	Color (Border/Copy)
Bone Densitometry	No	CJDE-BO1	CJDT-BO1	Yellow	Nuclear Med.	Yes	—	CJDT-NU2	Manila	
C.T. (Cat Scan)	Yes	CJDE-CT1	—	Kelly Green	P.E.T. (Positron Emission Tomography)	Yes	CJDE-PE1	—	Light Green	
Mammography	Yes	CJDE-MA1	CJDT-MA1	Dark Blue	Plain	No	CJDE-PL1	CJDT-PL1	White	
Mammography	Yes	CJDE-MA2	CJDT-MA2	Pink	Ultrasound	No	CJDE-UL1	CJDT-UL1	Purple	
Nuclear Med.	Yes	CJDE-NU1	CJDT-NU1	Red	Ultrasound	No	CJDE-UL2	CJDT-UL2	Gray	

CATEGORY INSERT JACKETS