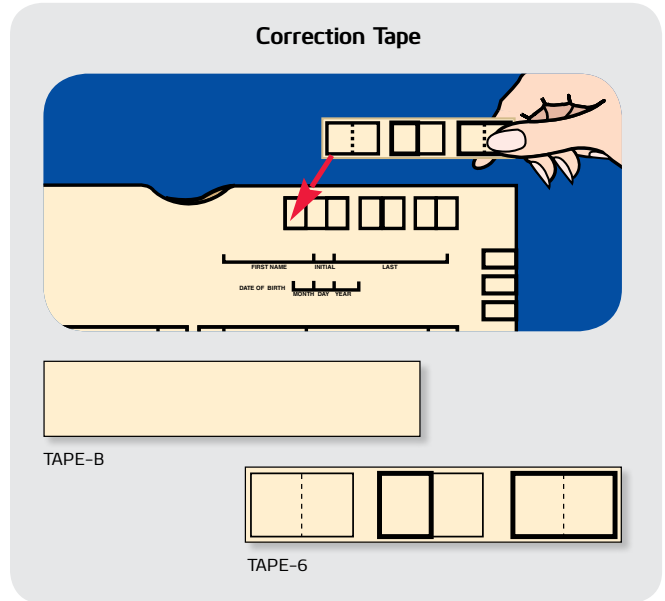
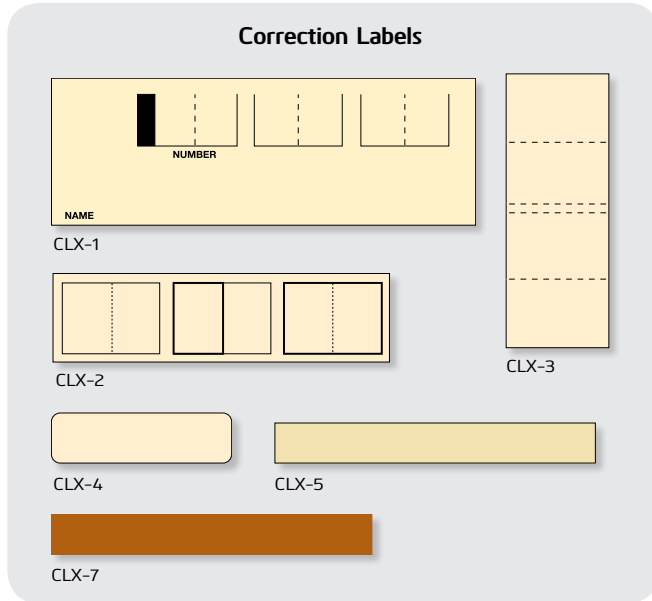


ACCESSORIES

CORRECTION TAPE/LABELS/STRIPS

Correction Labels & Tape

Cover any inaccuracies quickly and cleanly with our correction label and tape featuring a block out backing that virtually eliminates any bleed-through of old text.



Product Number	Description	Size	Qty.
CLX-1	Pre-printed Label—Manila	6" x 2"	500/Roll
CLX-2	Pre-printed Label—Manila	4-3/4" x 1-1/4"	
CLX-3	Pre-printed Label—Manila	1-1/2" x 4"	
CLX-4	Blank Label—Manila	2-1/4" x 5/8"	
CLX-5	Blank Label—Manila	4" x 1/2"	
CLX-7	Blank Label—Brown	4" x 1/2"	

Product Number	Description	Size	Qty.
TAPE-B	Blank Tape – Manila	5-1/2" x 1-1/4"	500/Roll
TAPE-6	Pre-printed label – Manila		



Mylar Reinforcement Strips

Repair and protect all of your folders and jackets with Mylar reinforcement strips — it will **DOUBLE** their shelf-life!

These durable strips are made from a clear, non-yellowing polyester material. Made to last, they are tear and puncture resistant with a permanent acrylic adhesive.

- Apply to new folders to prevent tearing at stress points
- Apply to old folders to repair torn edges and bottoms
- Do it yourself or call for low factory installed pricing

Product Number	Size	Qty.
CLL-10	2" x 11"	500/Pack
59702986	3" x 11"	500/Pack
CLL-4	4-3/8" x 1-11/16"	500/Box
CLL-5	5-1/4" x 1-3/4"	500/Box
CLL-6	8" x 1-3/4"	500/Box

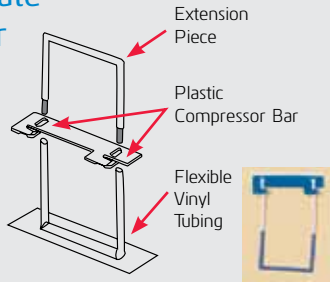
All of the labels and tapes shown on this page have permanent adhesive.

Install them yourself or call for low factory installed pricing!

Medi-Clip - the ultimate self-adhesive fastener

(2-3/4" center to center)

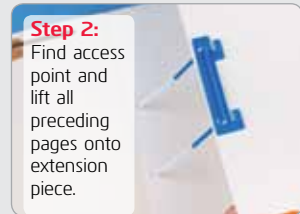
- 3-piece design provides easy insertion/removal of documents
- Paperwork remains in alignment
- Allows folder to open flat for easy copying
- Saves time!



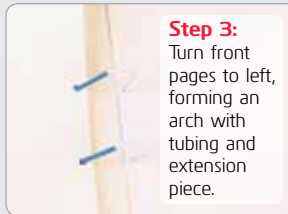
How to use Medi-Clip



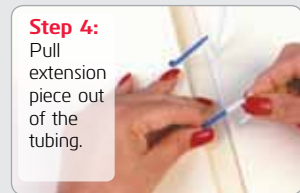
Step 1: Slide flexible tubing from under compressor bar grippers.



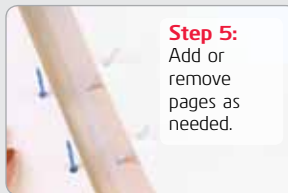
Step 2: Find access point and lift all preceding pages onto extension piece.



Step 3: Turn front pages to left, forming an arch with tubing and extension piece.



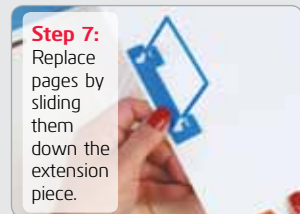
Step 4: Pull extension piece out of the tubing.



Step 5: Add or remove pages as needed.



Step 6: Re-insert extension piece into tubing.



Step 7: Replace pages by sliding them down the extension piece.



Step 8: Slide tubing back under compressor bar grippers.

Broad based 2" capacity self-adhesive fastener

- Fastener bonded to self-adhesive white tag base (1-1/2" x 7-1/2")



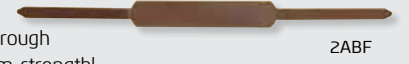
BB2B

Metal self-adhesive 1" or 2" fasteners

- Installs directly onto folder surface or insert through slits in folder for maximum strength!



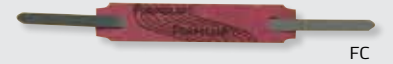
1ABF



2ABF

Foam clip 1-1/2" capacity self-adhesive fastener

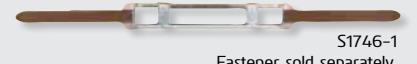
- Tear resistant fabric



FC

Steel compressor bar

- Works with all metal fasteners shown above

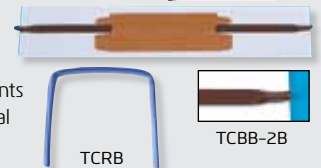


S1746-1

Fastener sold separately.

Tip-Clip™ broad based self-adhesive fastener

- Crimped ends to accommodate TCRB removal bar. Removal bar keeps paperwork aligned allowing the user to add and remove documents quickly and easily. One TCRB removal bar included with each order.



TCRB

TCBB-2B

Embedded metal 1" or 2" capacity fastener

- Clinched into folder from the outside and secured into slots with 8 tabs
- Provides super strength!



Available factory installed only.
Call (800) 435-4242 for details!

Product Number	Description	Qty.
MC2	Medi-Clips (Base, Extension, and Compressor)	100/Box
MC3	Base Only	100/Box
MC4	Extension Only	100/Box
MC5	Compressor Only	100/Box

Product Number	Description	Qty.
BB2B	Broad Based Self-Adhesive 2" Capacity	100/Box
1ABF	Metal Self-Adhesive 1" Capacity	100/Box
2ABF	Metal Self-Adhesive 2" Capacity	100/Box
TCRB	Removal Bar	1 Each
TCBB-2B	Tip-Clip™ Broad Based Self-Adhesive	100/Box
FC	Foam Clip Self-Adhesive 1-1/2" Capacity	100/Box
S1746-1	Steel Compressor Bar	100/Box

ACCESSORIES

POLY/VINYL POCKETS



Vinyl Pockets

- Heavy-duty 8 gauge vinyl
- Self-adhesive back panel extends above front panel
- Front of pocket is non-glare frost clear vinyl, welded to white vinyl back
- Rigid construction allows for easy placement and installation

Product Number	Outside Dimensions	Inside Dimensions	Location Of Opening	Qty.
SAP2	2-1/2" x 3-3/4"	2-1/4" x 3-1/2"	End (short dimension)	1 Each
SAP3	5-1/2" x 3-1/2"	5-1/4" x 3-1/4"	Top (long dimension)	
SAP4	6-1/2" x 4-1/2"	6-1/4" x 4-1/4"	Top (long dimension)	
SAP5	9" x 5-3/4"	8-3/4" x 5-1/2"	Top (long dimension)	

Must be ordered in increments of 100



CD/DVD Pocket

- Self-adhesive pocket
- Long lasting and durable
- Peel-away vinyl backing to apply to patient's file
- Polyethylene sleeve with flap



Product Number	Size	Qty.
VP44SA	5-1/4" x 5-1/4"	1 Each

Minimum order quantity of 110



Polyethylene Pockets

- 5 mil polyethylene material
- Lightweight and economical, yet durable
- Self-adhesive back panel extends above front panel
- Clear, non-yellowing polyethylene front, white back

Product Number	Outside Dimensions	Inside Dimensions	Location Of Opening	Qty.
SAP8	3" x 3/4"	2-1/2" x 3-1/4"	End (short dimension)	1 Each
SAP9	4-1/4" x 5-1/2"	3-3/4" x 5"	End (short dimension)	
SAP11	5" x 6-1/2"	4-1/2" x 6"	End (short dimension)	
SAP12	9-1/4" x 11-1/4"	8-3/4" x 10-3/4"	End (short dimension)	
SAP13	5-3/4" x 3-1/2"	5-1/4" x 3"	Top (long dimension)	
SAP14	7" x 4-3/4"	6-1/2" x 4-1/4"	Top (long dimension)	
SAP15	9-1/4" x 6"	8-3/4" x 5-1/2"	Top (long dimension)	

Must be ordered in increments of 100



Ziplock Polyethylene Pockets

- 3 mil polyethylene material
- Clear front panel for easy identification
- Easy to use ziplock open and close feature

Product Number	Outside Dimensions	Inside Dimensions	Location Of Opening	Qty.
SAP16	5-1/2" x 6-1/4"	5" x 5-1/4"	End (short dimension)	100/Box
SAP17	6-1/2" x 10"	6" x 9"	End (short dimension)	

Must be ordered in increments of 100

Film Storage

Pertinent filing information imprinted on the front panel includes: CONTENTS, FROM/THRU, FILE NO. and DATE FILED.

- Constructed of extra strong and durable oyster-white (#275 test) corrugated fiberboard
- Holds 60 films
- 6"W x 15"H x 20"D

Product Number	Size	Qty.
FB-22	6"W x 15"H x 20"D	12/Case



FB-22

Film Carriers

- Oversized, durable and expandable
- Nylon zippers provide convenient, fast access to contents
- Available in standard and gusseted version with carrying handles
- Super strong Armor Shell material is washable and waterproof

Product Number	Description	Size	Qty.
CC-005XX*	X-ray 4" expansion w/handles	22"W x 17"H	1 Each
CC-004XX	Letter/Legal 4" expansion w/handles	16-3/4"W x 11"H	1 Each
CC-820XX	Confidential Carrier, Letter	16-1/2"W x 12-1/2"H	1 Each
CC-810XX*	Confidential Carrier, X-ray	22"W x 19"H	1 Each
CC-830*	Security Tie	5"	250/Pack

*Not Shown

CC-810, and CC-830 not pictured not available in orange



CC-004Y

CC-820XX

To order a folder in color, substitute **XX** with letter(s):



Conference Caddy



CC71

- Patient file envelopes fit comfortably into the roomy, fully lined carrier
- All edges are bound and stitched for extra strength
- Luxurious look and feel of leather

Product Number	Size	Qty.
CC711	17" x 22"x 2"	1 Each

X-port™ Rolling X-ray Case



RXC-2

- Compact design with built-in 3" wheels and handle
- Large window pocket for routing slip
- 3-digit combination lock

Product Number	Size	Qty.
RXC-2	16" x 22"x 8"	1 Each

X-ray Caddies



CCRT-04 - Red
CCRT-06 - Green

Full Size Caddy:
16" x 22 x 6"

Jr. Size Caddy:
12" x 16" x 6"
Only available
in black

- All are open top
- Velcro closure
- Outside business card holder
- Leather handgrip and adjustable shoulder strap

Product Number	Color	Product Number	Color	Qty.
CCRT-01	Black	CCRT-08	Gray	1 Each
CCRT-04	Red	CCRT-09	Orange	
CCRT-05	Yellow	CCRT-10	Purple	
CCRT-06	Green	CCRT-03 ¹	Black	
CCRT-07	Blue			

¹Jr. X-ray caddy size: 12" x 16" x 6"

ACCESSORIES

TRANSPORT JACKETS



FilePro™ Transport Jackets

- “Barweld” construction provides a durable seal along the sides and bottom
- Two full-width clear pockets, 11-3/4" & 7-1/2" deep
- Each pocket features see-through polyester reinforcement across the top
- 60 pt. chipboard backing insert is cross grained making it equally rigid in both directions
- 21-1/2"W x 14-3/4"H overall size
- Available in 8 colors

To order a jacket in color, substitute **XX** with letter(s):



Product Number	Qty.
TJ XX 602	10/Box



CTJ-R

FilePro™ Champ™ Transport Jackets

- Two 25 pt. (total 50 pt.) chipboard backing inserts heat sealed between two sheets of French Calf Vinyl for optimum strength (Frost clear has see-through back without a chipboard)
- Two full-width clear vinyl pockets, 11-3/4" & 7-1/2" (deep)
- Each pocket features see-through Mylar reinforcement across the top
- Stitched nylon mesh reinforced sides and bottom
- 21"W x 14-1/2"H overall size
- Available in 6 colors

Product Number	Qty.
CTJ- XX	10/Box

To order a jacket in color, substitute **XX** with letter(s):



[†]Frost clear has see-through back without a chipboard

Heavy-Duty End Tab Outguide with Double Size Full-Hand Grip

The small pocket sits right on the tab allowing the charge-out slip to be inserted or checked without removing the guide.

- 13-1/4" x 9"

Product Number	Description	Qty.
FL171XX	Large Tab Letter Size	1 Each

To order a folder in color, substitute **XX** with letter(s):

R Red	Y Yellow	OR Orange	BE Blue	PE Purple
CL Clear	PK Pink	GN Green	BK Black	



End Tab Outguides Center & Bottom Position Tabs

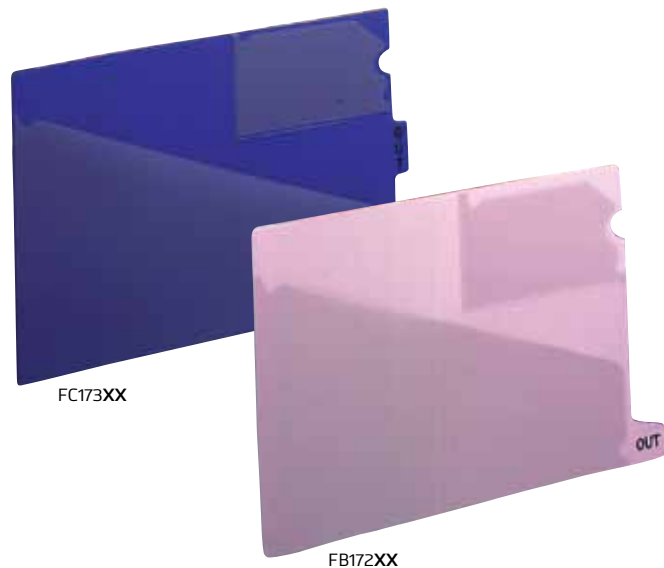
- Angle cut pocket
- Charge-out slip pocket
- "OUT" is printed on both sides of 1/2" tab
- Rigid vinyl
- 12-7/8" x 9-1/2"

Product Number	Description	Qty.
FC173XX	Center Position Tab Letter Size	50/Box
FB172XX*	Bottom Position Tab Letter Size	

*FB172 not available in clear

To order a outguide in color, substitute **XX** with letter(s):

R Red	Y Yellow	OR Orange	BE Blue	PE Purple
CL Clear	PK Pink	GN Green	BK Black	



Economy Outguide

Value priced outguides — when a full pocket isn't necessary.

- 5-1/2" x 3" pocket open on top and end for easy access
- 20"W x 4"H overall size

Product Number	Qty.
FEO-40	50/Box

